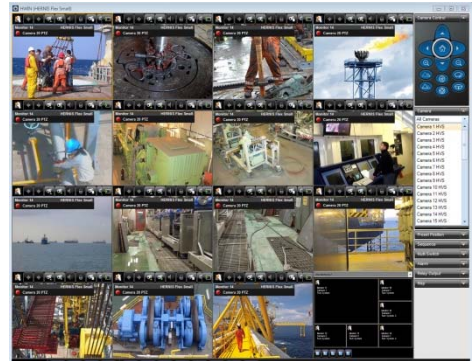


HERNIS HWIN

HERNIS CCTV Software



Product overview

HERNIS HWIN is the software needed to control cameras and manage video in HERNIS CCTV systems. Extensive CCTV expertise combined with the latest technology available has culminated in this highly efficient CCTV management environment. The interface gives preference to video management in one or multiple views by choice, and navigation is highly flexible bringing user experience to a new level.

The application is developed for the Microsoft .NET platform and may be run on Windows 7.

HERNIS HWIN comes in six versions meeting the specific needs of CCTV systems of different scale and demands. To optimize your CCTV management environment to your requirement choose from these versions:

HWIN Touch Basic is the most basic version of HWIN only available with touch-screen functionality. The application gives preference to video images and ease of use and applies to small CCTV systems.

HWIN Standard is the foundation for any HERNIS CCTV control environment and is typically used to manage small to medium sized CCTV systems.

HWIN Standard Alarm adds enhanced alarm management capability to the standard CCTV control environment.

HWIN Advanced supports multi-system-access and more advanced navigation such as layered maps to handle large-scale surveillance. Suited for medium to large CCTV systems.

HWIN Advanced Alarm adds enhanced alarm management capability to the advanced CCTV control environment.

HWIN Touch Advanced is the premium CCTV management environment with all the capabilities of the HWIN Advanced Alarm *plus* touch-screen operation.

Features

- Split view capabilities
- Custom interactive maps
- In-video pan/tilt
- Multi system access
- Remote system support
- Control of large screen application (HLSA) for video wall solutions
- Customizable joystick functions
- Advanced on-screen display (OSD)
- Sequential video playback
- Drag & drop navigation
- Dynamic context menus
- Tooltips
- Toolbars for key functions
- Fully touch enabled versions available
- Relay output control
- VMD functionality
- High-level configuration
- Differentiated user access levels
- User interface personalization
- Video playback and download

Benefits

- Easy to use
- Helps optimize performance
- Supports external CCTV systems
- Supports remote CCTV systems
- Supports video wall solutions
- Supports joysticks with up to 3 axis
- Fully touch enabled versions available
- 24/7 first line support
- Systems life time support

HERNIS HWIN

HERNIS CCTV Software

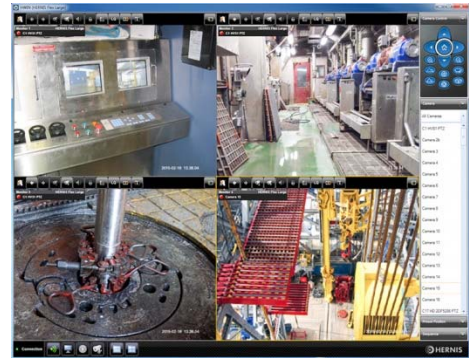


Versions Capabilities Chart:	HWIN Touch Basic	HWIN Standard	HWIN Standard Alarm	HWIN Advanced	HWIN Advanced Alarm	HWIN Touch Advanced
External systems support ¹				●	●	●
Remote systems support ²	●	●	●	●	●	●
Number of live video feeds in one split view (single/dual screen)	4	16/18	16/18	16/18	16/18	16/18
Map navigation				●	●	●
On-screen display (OSD)	●	●	●	●	●	●
Extended alarm control			●		●	●
Alarm status log		●	●	●	●	●
Sequences	●	●	●	●	●	●
Multi switch capability		●	●	●	●	●
DVR & Quad (HERNIS 400 systems)		●	●	●	●	●
Touch control	●					●
Relay output		●	●	●	●	●
HLSA control ³				●	●	●
Alarm log playback			●		●	●
Local recording/snapshots		●	●	●	●	●
Playback Mode		●	●	●	●	●
Configuration Mode		●	●	●	●	●

¹External CCTV systems are other HERNIS CCTV systems available via low latency network connections.
²Remote CCTV systems are other HERNIS CCTV systems available with limited connectivity for video and data.
³HERNIS Large Screen Application for video wall solutions

HWIN Touch Basic

HERNIS CCTV Software



Product overview

HWIN Touch Basic is the most basic version of HWIN and applies to small CCTV systems. The application is fully touch-enabled requiring no mouse or keyboard. The user interface gives preference to video images and ease of use and is particularly well-suited for drilling operators.

Its' touch enhanced user interface makes operators feel right at home:

- Windows touch gestures such as tapping, flicking, pressing and holding, and pinching
- in-video pan & tilt
- direct camera selection
- direct pre-set activation
- direct sequence activation
- split views

The split view capability of HWIN Touch Basic allows the operator to view up to 4 video feeds simultaneously on his monitor. The split views will appear in the Application taskbar enabling effortless change of scenes during operation.

In video pan & tilt allows the operator to simply touch the video image to move a camera in any direction. The speed in which the camera moves depends on how far off centre you press. Cameras are otherwise controlled with the control buttons in the HWIN menu or with a joystick. HWIN supports joysticks with up to three axis with fully configurable buttons for zoom, focus, iris, wipe/wash etc.

Drag and drop navigation allows you to select for instance a camera in the menu and drag it onto the split view to show live video from that particular camera. Sequences with alternating video images is another HWIN feature that supports the operator's performance.

HWIN Touch Basic does not include playback and configuration modes like the other HWIN versions*.

*HWIN Touch Basic is one of six HWIN versions that you can choose from to optimize the CCTV management environment to your requirement. Ask your HERNIS sales team for more information.

24 hour technical support line available for documented systems.

Features

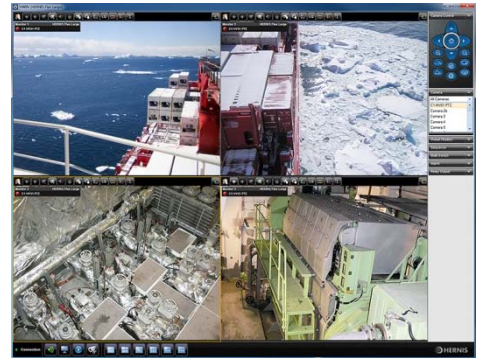
- Fully touch enabled basic control application for HERNIS CCTV systems
- Split view capability (4 videos)
- In-video pan/tilt
- Customizable joystick functions
- Sequential video playback
- Advanced on-screen display (OSD)
- Drag & drop navigation
- Dynamic context menus
- Tooltips
- Toolbars for key functions
- Differentiated user access levels
- User interface personalization

Benefits

- Easy to use, fully touch enabled
- Helps optimize performance
- Supports remote CCTV systems
- Supports joysticks with up to 3 axis
- 24/7 first line support
- Systems life time support

HWIN Standard

HERNIS CCTV Software



Product overview

HWIN Standard is the software designed to manage small to medium sized HERNIS CCTV systems. The design emphasizes the user-experience. Up to 18 video streams can be displayed simultaneously in split views. Flexible and easy to use navigation such as drag-and-drop, pop-up menus, tool tips and easy access to favourite tools makes every operator feel right at home in this camera and video management environment.

4 distinct application modes each fulfil key purposes:

- The Live mode – the normal operating mode where you view live video, control cameras and use the pre-sets, splits and sequences set up in configuration.
- The Playback mode – where you access recordings (video or images) archived in the system.
- The Connection mode - mainly used for logging on and off the system, but also where the application is set up.
- The Configuration mode – used for the definition of cameras, camera groups, sequences, switches, alarm actions and more

HWIN Standard supports split views. A split view may show from 1 to 18 video feeds depending on its purpose. After setting up split views for different surveillance tasks you can easily change scenes during operation. The split views you configure are always easily available in the application taskbar.

HWIN Standard caters for easy video playback and download and offers pre-alarm recording allowing operators to analyse events leading up to an alarm.

In video pan & tilt allows the operator to simply click in the video image to move the camera in any direction. The speed in which the camera moves depends on how far off centre you click. Cameras are otherwise controlled with the camera control buttons in HWIN or with a joystick. HWIN standard supports joysticks with up to three axis with fully configurable buttons for zoom, focus, iris, wipe/wash etc.

Drag and drop navigation allows the operator to drag for example a camera from the camera list onto the video view to show the live video from that particular camera. Sequences with alternating video images further enhance the operator's experience.

HWIN standard is one of six HWIN versions that you can choose from to optimize the CCTV management environment to your requirement. Ask your Eaton sales representative for more information.

24 hour technical support line available for documented systems.

Features

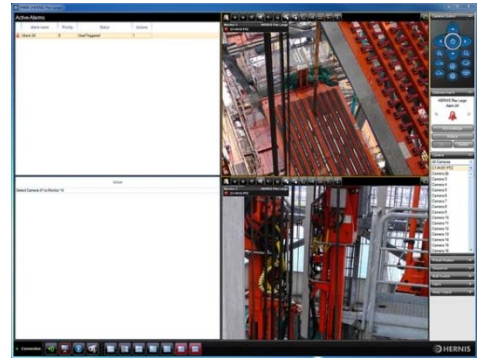
- Split view capabilities
- In-video pan/tilt
- Multi system access
- Remote system support
- Control of large screen application (HLSA) for video wall solutions
- Customizable joystick functions
- Relay output control
- VMD functionality
- Sequential video playback
- Advanced on-screen display (OSD)
- Drag & drop navigation
- Dynamic context menus
- Tooltips
- Toolbars for key functions
- High-level configuration
- Differentiated user access levels
- User interface personalization
- Video playback and download

Benefits

- Easy to use
- Helps optimize performance
- Supports remote CCTV systems
- Supports video wall solutions
- Supports joysticks with up to 3 axis
- 24/7 first line support
- Systems life time support

HWIN Standard Alarm

HERNIS CCTV Software



Product overview

HERNIS HWIN Standard Alarm is the software designed to manage small to medium sized CCTV systems with enhanced alarm management requirements.

Successful alarm management helps reduce unplanned downtime and increase safety and productivity on a site. With HWIN Standard Alarm the enhanced alarm management capability is integrated in the CCTV HMI. Key alarm management features help you optimize performance and support your company's alarm philosophy;

- Dedicated alarm view with advanced navigation capabilities
 - Single-click navigation to the source of an alarm
 - Alarm priority and type (User or system activated)
 - Alarm states distinguished by colour and symbols (normal, acknowledged, suppressed)
 - Time line with search capabilities
- Clear alarm identification throughout the CCTV user interface with colour and symbols
- Alarm actions (predetermined time saving responses to an alarm)
- Access privileges limiting who can acknowledge or disable alarms (individuals or groups).

HWIN Standard Alarm is based on the HWIN Standard application, its design emphasizing the user-experience. Up to 18 video streams can be displayed simultaneously in split views to support different surveillance tasks. Flexible and easy to use navigation such as drag-and-drop, pop-up menus toolbars and tool tips makes every operator feel right at home in this camera and video management environment.

HWIN Standard Alarm supports control of the stand-alone application HERNIS Large Screen Application (HLSA) for video walls. The controller is fully integrated in the HWIN user interface enjoying all the advanced navigation capabilities of HWIN.

HWIN standard Alarm is one of six HWIN versions that you can choose from to optimize the CCTV management environment to your requirement. Ask your Eaton sales representative for more information.

24 hour technical support line available for documented systems.

Features

- Split view capability (up to 18 video streams)
- In-video pan/tilt
- Remote system support
- Control of large screen application (HLSA) for video wall solutions
- Customizable joystick functions
- Relay output control
- VMD functionality
- Sequential video playback
- Advanced on-screen display (OSD)
- Drag & drop navigation
- Dynamic context menus
- Tooltips
- Toolbars for key functions
- High-level configuration
- Differentiated user access levels
- User interface personalization
- Video playback and download

Benefits

- Easy to use
- Helps optimize performance
- Supports remote CCTV systems
- Supports video wall solutions
- Supports joysticks with up to 3 axis
- 24/7 first line support
- Systems life time support

HWIN Advanced

HERNIS CCTV Software



Product overview

HWIN Advanced is the ultimate tool for controlling cameras in medium to large CCTV systems. The design attends to the CCTV operator's need for quick and easy navigation in complex systems, or even in multiple CCTV systems combined.

The HWIN Advanced application supports multi-system-access, meaning that from one single work station the operator can access and control any external HERNIS IP CCTV systems that he is authorized for. This ability to control a virtually unlimited number of cameras spread over vast geographical areas and on remote locations adds a whole new dimension to the CCTV architecture.

Layered interactive graphical maps (or site plans) with camera and alarm hotspots (hyperlinks) provide the bird's eye view needed to navigate quickly in larger CCTV systems. From one top map the operator can quickly penetrate layers of detail and access cameras or respond to alarms anywhere in the system with just a few clicks. The maps can be drawings, aerial views, photos or custom made graphics of your site(s). They are fully integrated in the HWIN Advanced design supporting context menus, drag and drop etc. so to view real time video from an area you can simply drag a camera identifier from the map onto the video view. In complex inter-connected CCTV systems maps are necessary for efficient navigation.

Like HWIN Standard, the HWIN Advanced supports split views showing from 1 to 18 video feeds, depending on the purpose.

HWIN Advanced caters for easy video playback and download and offers pre-alarm recording helping operators analyse events leading up to an alarm.

In video pan & tilt allows the operator to simply click in the video to move the camera in any direction. Cameras are otherwise controlled with the camera control buttons in HWIN or with a joystick. HWIN supports joysticks with up to three axis with fully configurable buttons for zoom, focus, iris, wipe/wash etc. Drag and drop navigation and sequences with alternating video images further enhance the operator's experience.

HWIN Advanced Alarm supports control of the stand-alone application HERNIS Large Screen Application (HLSA) for video walls.

HWIN Advanced is one of six HWIN versions that you can choose from to optimize the CCTV management environment to your requirement. Ask your Eaton sales representative for more information.

24 hour 1st line technical support for documented systems.

Features

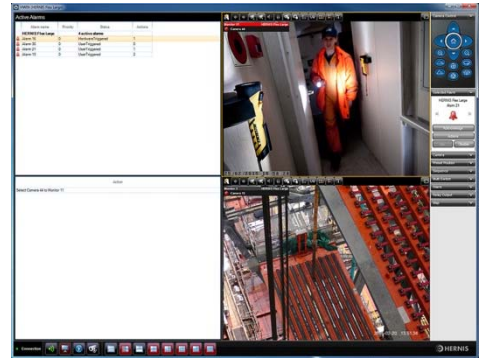
- Split view capabilities
- Custom interactive maps
- In-video pan/tilt
- Multi system access
- Remote system support
- Control of large screen application (HLSA) for video wall solutions
- Customizable joystick functions
- Relay output control
- VMD functionality
- Sequential video playback
- Advanced on-screen display (OSD)
- Drag & drop navigation
- Dynamic context menus
- Tooltips
- Toolbars for key functions
- High-level configuration
- Differentiated user access levels
- User interface personalization
- Video playback and download

Benefits

- Easy to use
- Helps optimize performance
- Supports external CCTV systems
- Supports remote CCTV systems
- Supports video wall solutions
- Supports joysticks with up to 3 axis
- 24/7 first line support
- Systems life time support

HWIN Advanced Alarm

HERNIS CCTV Software



Product overview

HERNIS HWIN Advanced Alarm is the software designed to manage medium to large CCTV systems with enhanced alarm management requirements.

Successful alarm management helps reduce unplanned downtime and increase safety and productivity on a site. With HWIN Advanced Alarm the enhanced alarm management capability is integrated in the CCTV HMI. Key alarm management features help you optimize performance and support your company's alarm philosophy;

- Dedicated alarm view with advanced navigation capabilities
 - Single-click navigation to the source of an alarm
 - Alarm priority and type (User or system activated)
 - Alarm states distinguished by colour and symbols (normal, acknowledged, suppressed)
 - Time line with search capabilities
- Clear alarm identification throughout the CCTV user interface with colour and symbols
- Alarm actions (predetermined time saving responses to an alarm)
- Access privileges limiting who can acknowledge or disable alarms (individuals or groups).

HWIN Advanced Alarm is based on the HWIN Advanced application, its design emphasizing the user-experience in larger CCTV systems. Up to 18 video streams can be displayed simultaneously in split views set up to support different surveillance tasks.

Advanced interactive map navigation and easy to use features such as drag and drop, pop-up menus, tool tips and toolbars makes every operator feel right at home in this camera and video management environment.

Supporting multiple external CCTV systems this application is well suited for remote surveillance of CCTV projects spreading across vast geographical distances.

HWIN Advanced Alarm supports control of the stand-alone application HERNIS Large Screen Application (HLSA) for video walls.

HWIN Advanced Alarm is one of six HWIN versions that you can choose from to optimize the CCTV management environment to your requirement. Ask your Eaton sales representative for more information.

24 hour 1st line technical support for documented systems.

Features

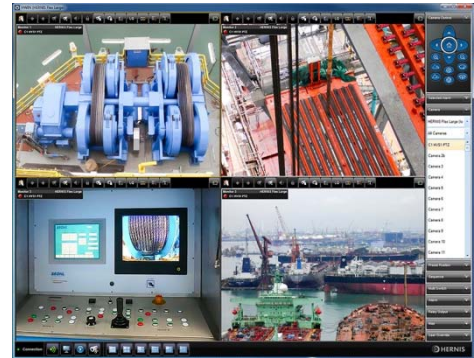
- Split view capabilities
- Custom interactive maps
- In-video pan/tilt
- Multi system access
- Remote system support
- Control of large screen application (HLSA) for video wall solutions
- Customizable joystick functions
- Relay output control
- VMD functionality
- Sequential video playback
- Advanced on-screen display (OSD)
- Drag & drop navigation
- Dynamic context menus
- Tooltips
- Toolbars for key functions
- High-level configuration
- Differentiated user access levels
- User interface personalization
- Video playback and download

Benefits

- Easy to use
- Helps optimize performance
- Supports external CCTV systems
- Supports remote CCTV systems
- Supports video wall solutions
- Supports joysticks with up to 3 axis
- 24/7 first line support
- Systems life time support

HWIN Touch Advanced

HERNIS CCTV Software



Product overview

HERNIS HWIN Touch Advanced is the software designed to manage medium to large CCTV systems with enhanced alarm management requirements. The application is also fully touch enabled.

Successful alarm management helps reduce unplanned downtime and increase safety and productivity on a site. With HWIN Advanced Alarm the enhanced alarm management capability is integrated in the CCTV HMI. Key alarm management features help you optimize performance and support your company's alarm philosophy;

- Dedicated alarm view with advanced navigation capabilities
 - Single-click navigation to the source of an alarm
 - Alarm priority and type (User or system activated)
 - Alarm states distinguished by colour and symbols (normal, acknowledged, suppressed)
 - Time line with search capabilities
- Clear alarm identification throughout the CCTV user interface with colour and symbols
- Alarm actions (predetermined time saving responses to an alarm)
- Access privileges limiting who can acknowledge or disable alarms (individuals or groups).

HWIN Touch Advanced is based on the HWIN Advanced Alarm application, with additional touch functionality. Its design emphasizing the user-experience in larger CCTV systems. Up to 18 video streams can be displayed simultaneously in split views set up to support different surveillance tasks.

Advanced interactive map navigation and easy to use features such as drag and drop, pop-up menus, tool tips and toolbars makes every operator feel right at home in this camera and video management environment.

Supporting multiple external CCTV systems this application is well suited for remote surveillance of CCTV projects spreading across vast geographical distances.

HWIN Touch Advanced supports control of the stand-alone application HERNIS Large Screen Application (HLSA) for video walls.

HWIN Advanced Alarm is one of six HWIN versions that you can choose from to optimize the CCTV management environment to your requirement. Ask your Eaton sales representative for more information.

24 hour 1st line technical support for documented systems.

Features

- Split view capabilities
- Custom interactive maps
- In-video pan/tilt
- Multi system access
- Remote system support
- Control of large screen application (HLSA) for video wall solutions
- Customizable joystick functions
- Relay output control
- VMD functionality
- Sequential video playback
- Advanced on-screen display (OSD)
- Drag & drop navigation
- Dynamic context menus
- Tooltips
- Toolbars for key functions
- High-level configuration
- Differentiated user access levels
- User interface personalization
- Video playback and download

Benefits

- Easy to use, fully touch enabled
- Helps optimize performance
- Supports external CCTV systems
- Supports remote CCTV systems
- Supports video wall solutions
- Supports joysticks with up to 3 axis
- 24/7 first line support
- Systems life time support