

PT70 outdoor dome HD IP

Complete PTZ camera station (safe)



Overview

Eaton's weather proof series are highly advanced process and surveillance camera stations that are designed to meet world wide demanding environments.

Features

- Full HD resolution
- Automatic image flip
- Automatic day/night function
- Internal cabling
- Audio (optional)
- Flexible powering (PoE, 30 VAC, 24 VDC)
- Scratch resistant hard coating
- Multi-cable accommodated
- Auto focus with manual override
- Auto iris with manual override
- Built-in heating
- IR sensitive
- Designed to accept future software upgrades remotely

The PT70 dome is well suited for marine and oil & gas applications, in arctic as well as equatorial climates. The IP66 ingress protection makes this dome exceptionally resilient to extreme environmental conditions where vibration, humidity, extreme temperature variations and corrosion are a normal occurrence.

The dome offers 360° panoramic rotation and 180° tilt with vertical image flip. The design is optimised for position accuracy. In poor light conditions the camera will automatically turn to black and white for optimal image quality and autofocus further increases the user experience.

The PT70 dome can work with illumination as low as 0.01 lux, has 1080p resolution and uses Eaton HERNIS™ Flex IP control protocol. Additionally the future proof design can facilitate future software upgrades and diagnostics remotely.

Specification

Type approval DNV GL Certificate No: TAA00000C8

Specification

Physical dimensions camera

Weight 6.5 kg

Dimensions (H x Ø) 238 x 206 mm (with cupola)

Mounting Ceiling - bolts: M6 (not included)

Material & finish Stainless steel AISI 316L, electro polished
Polycarbonate dome cupola

Operating conditions camera

IP protection rate IP66 (≈ NEMA 4x)

Operating temperature range -40°C ~ +55°C (Heating Element inside Housing)

Camera

Image sensor 1/2.8" progressive scan CMOS

Sync system Internal

Frame rate 50 Hz: 25 fps (1920 × 1080), 25 fps (1280 × 720)
60 Hz: 30 fps (1920 × 1080), 30 fps (1280 × 720)

Min. illumination Color: 0.05 lux @ (F1.6, AGC ON)
B/W: 0.01 lux @ (F1.6, AGC ON)

S/N ratio / WDR > 50 dB / WDR

Lens

Focal length 4.7 - 94 mm, 20 x optical zoom

Aperture range F1.6 - F3.5

Angle of view 61.4° - 2.9° (wide - tele)

Min. working distance 10 mm - 1500 mm (wide - tele)

Zoom speed Approx. 2.7 s (optical, wide - tele)

Day & night IR cut filter auto switch

Specifications IP

Protocol IPv4/IPv6, TCP/IP, HTTP, DHCP, DNS, DDNS, RTP, RTSP, PPPoE, SMTP, NTP, UPnP, SNMP, FTP, 802.1x, QoS, HTTPS, IPv6 (SIP, SRTP optional)

Compression Main stream: H.264
Sub stream: H.264, MJPEG

H.264 compression profile Main profile, high profile

Dual-streaming Supported

Video bit rate 256 Kbps - 13 Mbps

Ethernet port Spring terminal, 10M/100M ethernet interface

Electrical data CAT6 cable AWG23

Attributes

Power supply 30VAC (+10% -30%, 50/60Hz) / 24VDC (+/-10%) / PoE (IEEE802.3at)
Camera works on 30VAC or 24VDC without any adjustments or settings
PoE operation need a dip switch setting on RX272 card

Power consumption 30VAC: 10W Min. (15W Max. PTZ on) (20W Max. heater on)
24VDC: 10W Min. (15W Max. PTZ on) (20W Max. heater on)
PoE at: 10W Min. (15W Max. PTZ on) (20W Max. heater on)

Heat dissipation Min. 10W (Max. 20W PTZ on)

Rotating angle/variable speed Pan continuous 360° / speed 1.8°/sec. - 110°/sec
Tilt 180° / speed 1.8°/sec. - 110°/sec

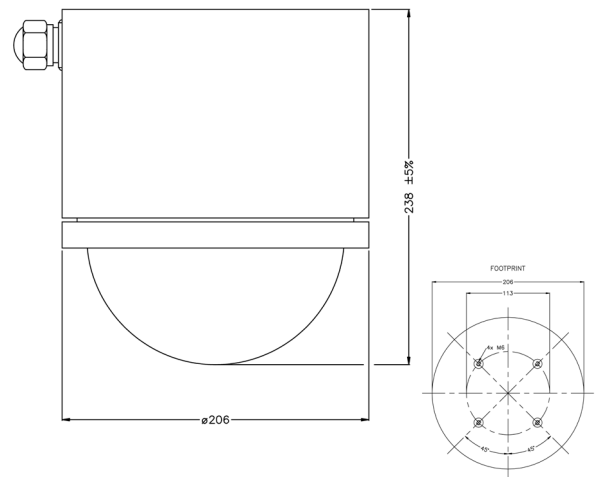
Preset/home position 100 preset + 4 home positions, accuracy ≤ 0.1°

Electrical data IP connection: minimum CAT6 AWG 23 for PoE

Accessories

Optional Mounting Plate: white/electro polished
Safety clip with 2 meter wire

General arrangement drawing (all dimensions in mm)



Ordering requirements

The following code is designed to help in selection of the correct unit.

HERNIS™ part no: 097167-157/4662

157/4662 IP 24VDC / 30VAC / PoE 20xZ, 1080p, gland